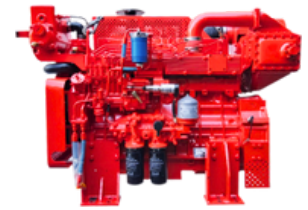


# KFP4RTA-NLH17



KFP Model	Hp Rating @RPM				
	1760	2100	2200	2350	2600
KFP4RTA-NLH17	118	122	128	157	166

Engine Model	Cyl Arr	Aspiration	Bore x Stroke	Displacement	Type of Governing	Battery Required	Flywheel Housing	Flywheel SAE	L x W x H	Engine Weight Dry
4R1040TA	4/ Inline	Turbocharged Aftercooled	105 X 120	4.16	Mechanical	12V	SAE-3	SAE-10"-SAE-11.5"	1312 x 723 x 1293	590

## STANDARD PACKAGE INCLUDE

- Engine Power as per ISO03046
- Flexibel Industrial Slicer
- Heat Exchanger Cooled
- Diesel Engine
- Flywheel, Dry Air Cleaner, Fuel Injection System
- Alternator & Starter Motor
- Flywheel Housing
- Speed Adjustment

## Optional Package

- Sensors & Switches (wiring harnessess, jacket water heater, panel, second starter, pigtail harness)
- Residential Slicer
- Stub shaft, Drive shaft, Coupling guard
- Cooling loop
- Flexible fuel pipes

